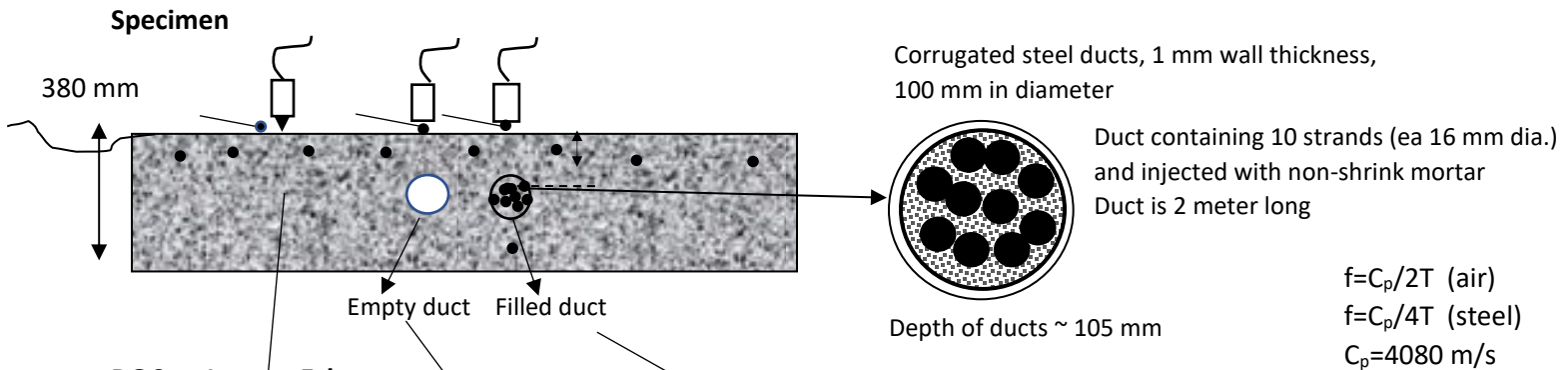
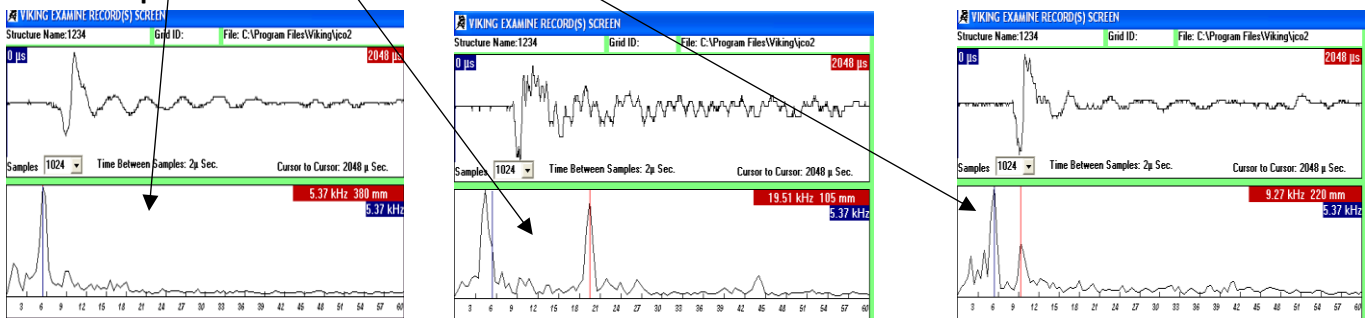


NDTitans in action

Case 9.2 Injection quality of cable ducts tested by impact-echo and ultrasound tomography on a controlled specimen



DOcter Impact-Echo



Solid

$f = 5.37$ kHz

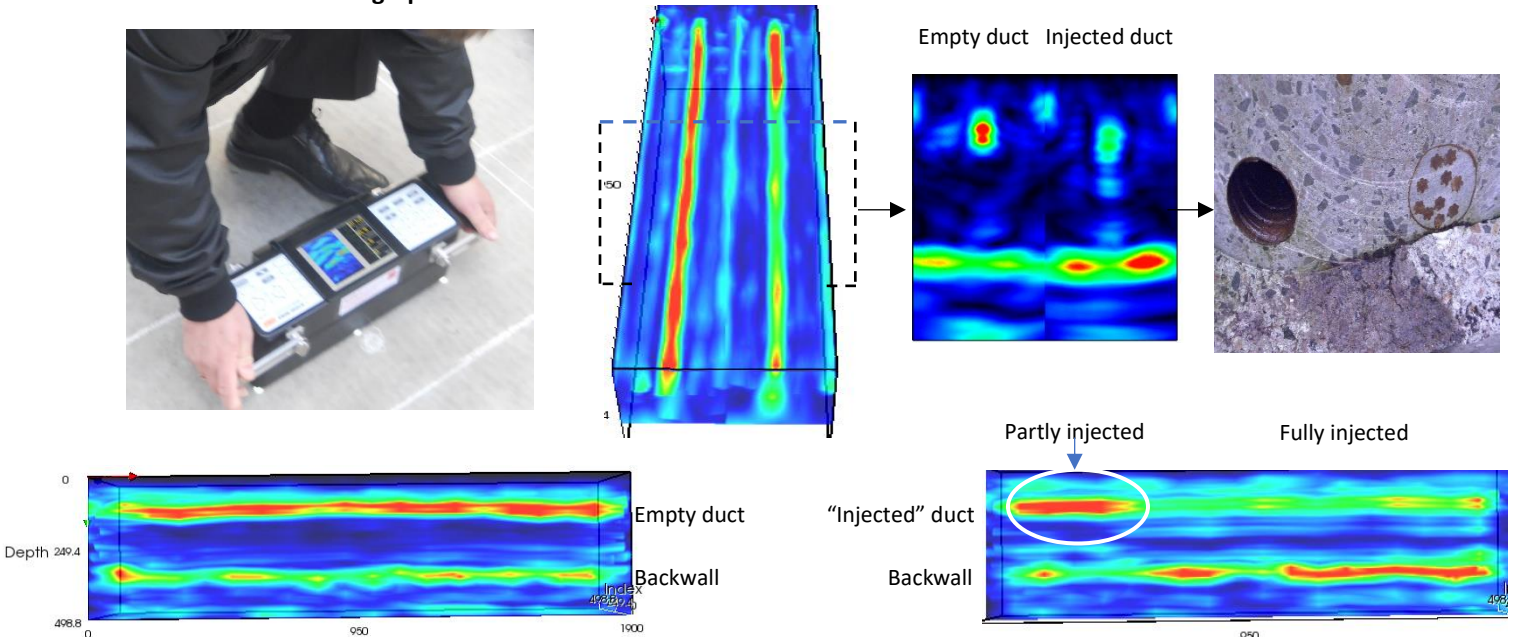
Empty duct

$f = 4.39$ kHz (drop) & $f = 19.51$ kHz (depth 105 mm)

Injected duct

$f = 5.37$ kHz & $f = 9.27$ kHz (strands 110 mm deep)

MIRA Ultrasound Tomographer



DOcter Impact-Echo and the MIRA identified the same conditions of the injection of the cable ducts, also in the first area of the injected duct (the red color) found to be partly injected.