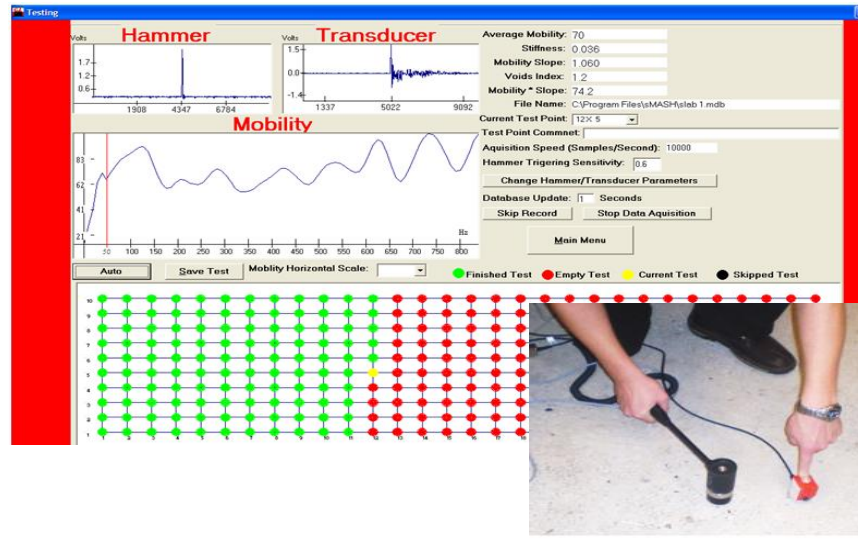


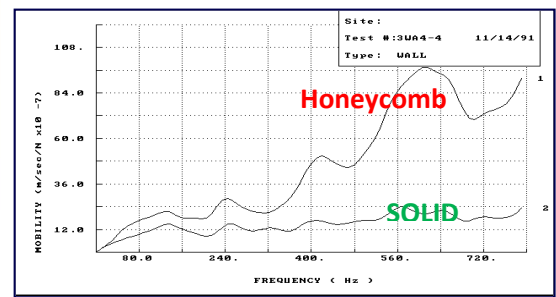
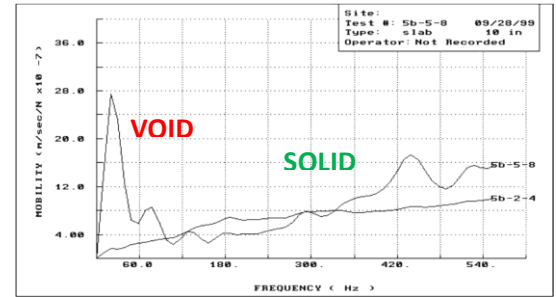
# NDTitans in action



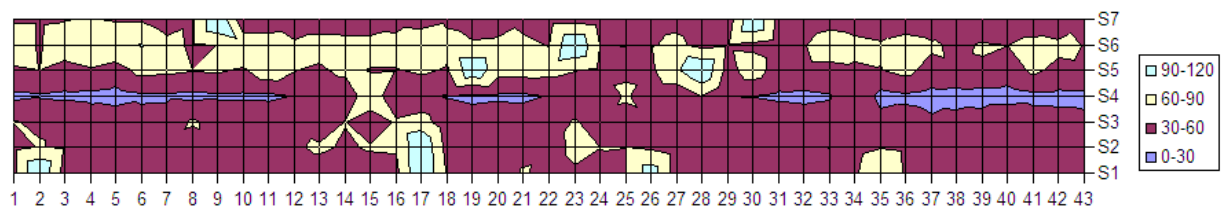
## Case 10.2 Integrity of North Virginia's Interstate 66 bridge deck evaluated by impulse response, USA



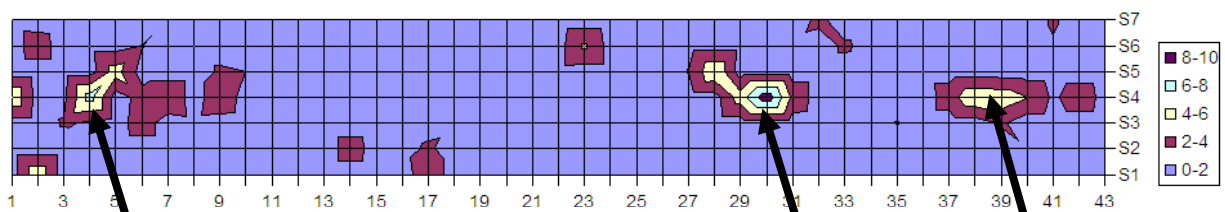
Typical Responses



### The bridge deck, the testing and the findings



MOBILITY



VOIDS INDEX

Delamination

Honeycomb

Delamination

The suspicious areas found were subsequently tested by DOCTer Impact-Echo, by which the presence of the delaminations and the honeycomb were established. Testing of the whole slab lasted 2.5 hours.